

مجلة  
الجمعية المصرية لهواة طوابع البريد



JOURNAL DE LA  
SOCIÉTÉ PHILATELIQUE D'EGYPTE  
LE CAIRE

JOURNAL OF THE  
PHILATELIC SOCIETY OF EGYPT  
CAIRO



December Quarter 2021  
Vol XII No 4- Issue No 154

L'ORIENT  
PHILATELIQUE

# PHILATELIC SOCEITY OF EGYPT

16 Abd El-Khalek Sarwat St., Cairo – P.O. Box 142

## **Administration Board**

Dr. Eng Sherif Samra	President
Mr. Hany Salam	Vice President
Mr. Khaled Mostafa	General Secretary
Mr. Raouf Ramzy	Treasurer
Mr. Mahmoud Ramadan	Member
Dr. Sherif El-Kerdani	Member
Eng. Tarek Mokhtar	Member
Mr. Ahmed Youssef	Member
Mr. Mohamed Yehia	Member

## **L'OP Magazine**

Dr. Amr EL-Etreby	Editor in Chief
-------------------	-----------------

Cover design by Dr. Eng. Mohamed Omar



L'Orient Philatelique

PHILATELIC SOCEITY OF EGYPT



**FOUNDING MEMBER OF  
THE INTERNATIONAL FEDERATION PHILATELY PRESS**

**International Philatelic Exhibition**  
Bronze Medal, (WIPA 1933), (PRAGA 1938).

**National Philatelic Exhibition**  
Silver Medal, (Alexandria 1939), (Alexandria 1945).

**International Philatelic Exhibition**  
Vermeil Medal, (Cairo 1946). Bronze Medal, (Imaba 1948). Silver Medal, (Reinatex Mte. Carlo 1952). Vermeil Medal (Stockholmia 55), (Finlandia 56).

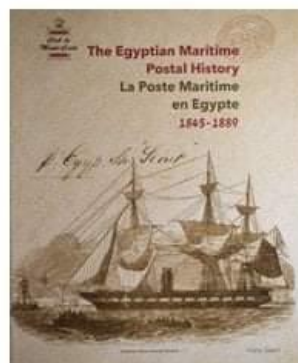
**Content of This Number**

	Pages
The Mohamed Aly Post (MAP) Reviewed by Gregory Todd in RPSL.....	5
Shibin El-Kom Postmarks 1870 – 1922 .....	8

## The Egyptian Maritime – Postal History – 1845-1889

Gold Medal - Philatelic Literature

***Congratulations*** Hany Salam



Under the patronage of H.E. the President of the Hellenic Republic  
Ms. Katerina Sakellariopoulou



**NOTOS 2021**  
European Philatelic Exhibition

19-22 November 2021, Athens, Greece



ان العطاء فى الحياة سر من اسرار الخلود. سرا عرفناه معك وكان نمطا لحياتك. لن بمحو الموت ذكر  
من أعطى كل هذا العطاء و مهما كتبنا من كلمات الرثاء فلن نوفيك حقك لما قدمته من وقت و جهد  
بحب و تفان فى سبيل تطور و تقدم هواية جمع طوابع البريد.

تغمذك الله بواسع رحمته وأسكنك فسيح جنته

وانا لله وانا اليه راجعون

**Tarek Mokhtar a board member, a scholar, an exhibitor and a friend.**

**Tarek is one of the most popular figures in the hobby in Egypt and the Arab world. He is a kind, loveable and generous friend to everyone.**

**Our heart drips with blood over his loss. May God bless him with his vast mercy and make him dwell in His vast Paradise and grant his family patience and solace.**



## *The Royal Philatelic Society London*



### **The Mohamed Aly Post (MAP) The True Story of the Egyptian Vice Royal Post By Mahmoud Ramadan EPS board member**

**Reviewed by Gregory Todd FRPSL.**

'Upper Egypt' is, most confusingly for some of us, the geographically southern part of Egypt, below Cairo. Whilst the 'Poste Vice-Realì Egiziane' (the 'PV-RE' or Egyptian Vice Royal Post) in Egypt is well known from its inception in 1864, when the Posta Europea system was purchased and transferred to the State, the area covered by this system was largely all points north from Cairo to Alexandria and East as far as Suez, in line with the burgeoning railway system.

However, as Mr. Ramadan points out in his introduction, the purchase also included the Mohamed Aly Post ('MAP'). Due to a paucity of material, this service, whilst alluded to and hesitantly listed by Jean Boulad d'Humieres and Peter Smith amongst others in the past, has been unable to be studied in full.

The 'MAP' service, from circa 1825 until 1875, was normally stampless but not entirely so from 1866. Letters mailed from Cairo to

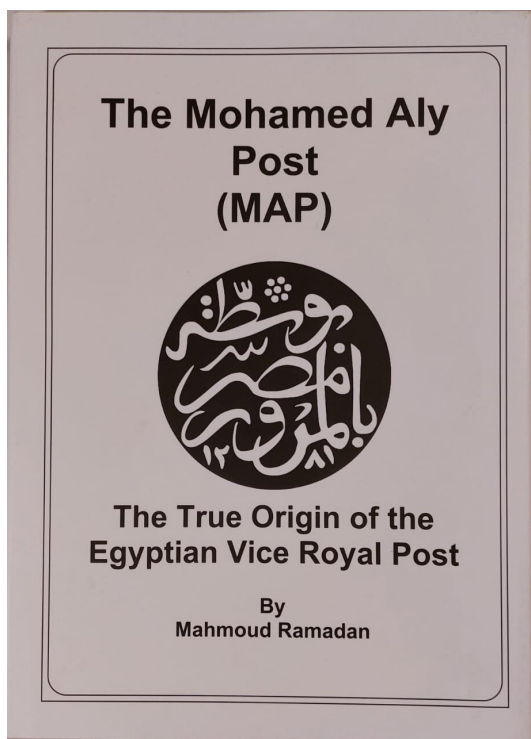
Upper Egypt - the southern towns on the Nile such as Assiout, Ghirgeh, Qena, Esna, Aswan, Korosko, Wadi Halfa and as far as Khartoum (and even further) utilised the Mohamed Aly Post with weights recorded in dirhems rather than grams (1 dirhem = 3.12 grams), cancellations in Arabic rather than Italian (the lingua franca of the PV-RE), the hijiri and Coptic calendar were often utilised. Therefore one can see why philatelists had problems examining the 'MAP' covers.

This book explains, with superb illustrations throughout, the methods and rates of postage to and from Upper Egypt and the Sudan. The author, by precise illustrations has thankfully, for those of us who do not read Arabic, listed all the known cancellations of this service (Ottoman-inspired negative seal types) and provided details of all the known cancellations that were unearthed, primarily from the Biolato collection and the 'Asyut Find' of 2016 and the now known dates of use. It is only a pity the find was not larger as the covers themselves remain rarities.

The author has also provided a splendid chapter on how to 'read' and identify the Arabic addressed and annotated covers and has provided a listing of the rates charged for the

MAP service between the various towns. This is an invaluable book for all students of

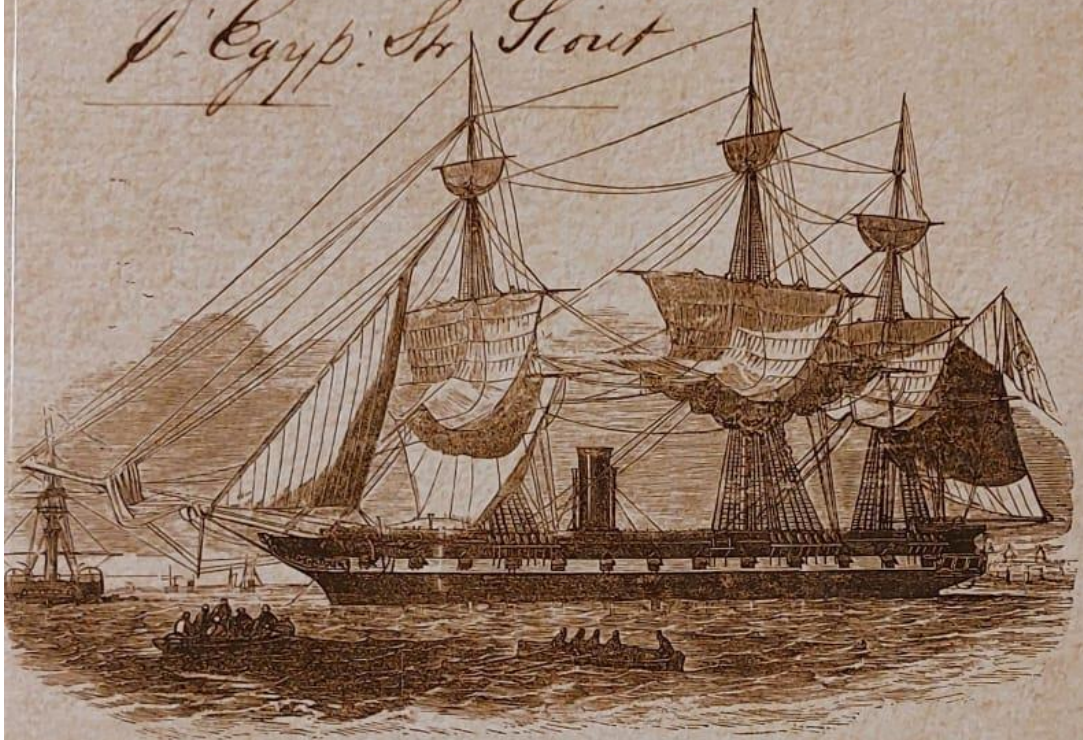
Egyptian and Sudanese philately and the author is to be congratulated on his research and diligence on a fascinating and difficult subject. The last wonderful point about this book is that the author will offer the book, when circumstances permit, free of charge to all members of the Egypt Study Circle and this generosity is also to be applauded.





# **The Egyptian Maritime Postal History La Poste Maritime en Egypte 1845-1889**

*D'Egypte: St. Louis*



EGYPTIAN STEAM FRIGATE SHAHKEE

Hany Salam



## Shibin El-Kom Postmarks 1870 - 1922

**By EPS member Tarek Mokhtar**

\* This one frame exhibit collected a Gold and large vermeil medals several times in Cairo, New York, Greece, Taiwan, Sngapoore, Thailand & UAE.

\* It was also exhibited in MonacoPhil 2019 29<sup>th</sup> November 2019 – Treasures of Egypt



## SHIBIN EL-KOM POSTMARKS 1870 – 1922



Shibin El-Kom is a small Egyptian town located at the middle of the Delta, about 73 km North of Cairo, and it has been the capital of Menofia governorate since 1826. In the late Mameluke period, Shibin el-Kom reached an area of 3,121 acres, I have chosen it being a true example of a major agriculture Egyptian town in the Delta of Egypt, it also presents an interesting piece of postal history of Egypt.

The first post office was opened in 1870 and it was located at the center of the town, Few hundred meters from the railway station and few meters away from Shibin Sea (Bahr Chibin) harboring steamers that carried postage on board in the period between 1888 and 1898.

This exhibit is aimed at identifying the postmarks cancelation types and their relevant usages from 1870-1922.

11 Types were recorded during this period including one discovered by the exhibitor and differences between them were in diameter and the dual languages used along the years.

- Type I the sole town using this type also using C in (El-Com) later changed to K (El-Kom)
- Type II the diameter was been smaller but use C instead of H in Shibin, Highlighted by the latest usage date discovered by the exhibitor
- Type III using Swiss type with C in Chibin instead of S
- Type IV shows two types of the Crescent and Star postmarks Highlighted by the rare postal service handstamp designated with a PS-number
- Type V shows three different postmarks together with scarce TPO "AMBI-BAHR-CHIBIN" & "CHIBIN EL-KOM - TANTA"
- Type VI shows Rural Service postmark Highlighted by the earliest recorded date
- Type VII also has two post marks with combination with different spelling
- Type VIII bridge design showing the spectrum of services, Highlighted by the earliest date usage for Rural Service discovered by the exhibitor
- Type IX without bridge and used as above
- Type X with different font in Arabic letter ن "Noun"
- Type XI unrecorded discovered by the exhibitor shows the telegraph mark

References : Egypt Stamps & Postal History by Peter A.S. Smith

Egypt – The Rural Postal Service by Mike Murphy & Ibrahim Shoukry

Egyptian postal markings of 1865 through 1879 by Peter R. Feltus

## Type I

Shibin El-Kom the sole town using this type (PS I-4) with V.R. (Vice-Real) Poste Egiziane With outer circle diameter 28.5 mm, This is the only type Used C in (El-Com) instead of K (El-Kom), used between 1870 to 1875

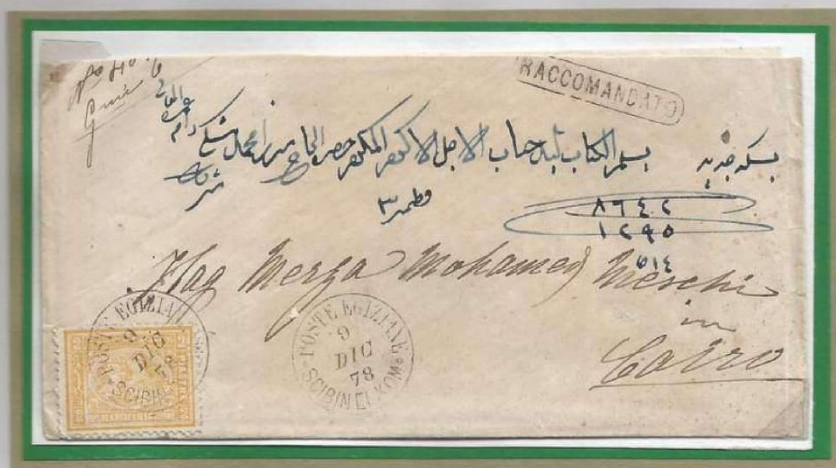


- 1- 1875 (19 Apr) Folded letter mailed from "Shibin El-Kom" to "Cairo" franked with 1 piaster which is the rate for internal letters up to 10 g tied by double strike V.R. EGIZIANE "SCIBIN EL-COM" c.d.s with POSTE EGIZIANE "CAIRO" c.d.s arrival on the same day on reverse
- 2- 1873 (4 Dec) Folded letter mailed from "Cairo" to "Shibin El-Kom" franked with 1 piaster which is the rate for internal letters up to 10 g tied by V.R. POSTE EGIZIANE "CAIRO" c.d.s with POSTE V.R. EGIZIANE "SCIBIN EL-COM" c.d.s arrival on the same day

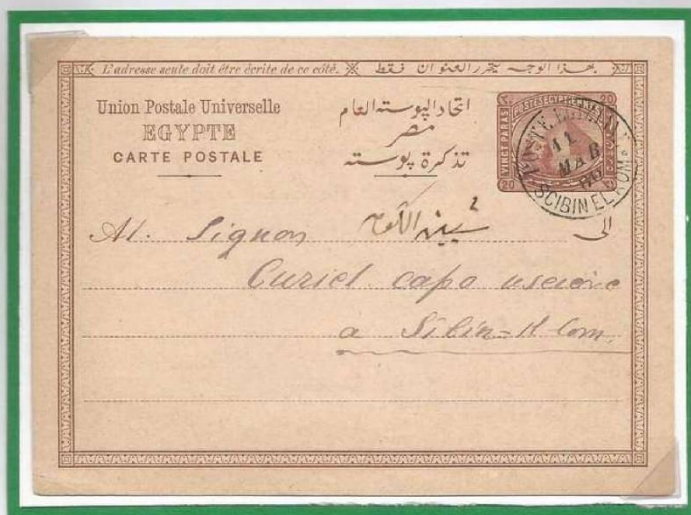


## Type II

The letters V.R. (Vice-Reali) was removed and use only Poste Egiziane with outer circle diameter 22.5 mm, The first type used K in (El-Kom), used between 1875 to 1880



1878 (Dec 9), Registered Local cover mailed from Shibin El Kom to Cairo, franked with 2 pi tied by "POSTE EGIZIANE SCIBIN EL KOM" c.d.s, arrival "CAIRO" c.d.s Arrival on the same day on reverse



1880 (Mar 11), Enville Stationary postal card 20 Para, tied by "POSTE EGIZIANE SCIBIN EL-KOM" c.d.s Arrival on the same day on reverse about 38 days later than what has been recorded so far !





### Type IV (I & II)

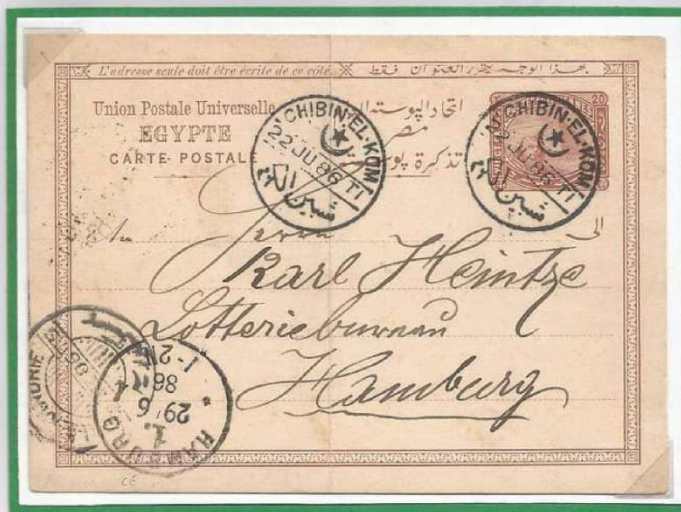
**I - Postal Service Handstamps are designated with a PS-number with outer circle diameter 32 mm, used probably 1870's**

**II - The Crescent and Star with outer circle diameter 25 mm, This type like Type III used C in Chibin instead of S, used probably between 1884 to 1890**



Used Postal seal Type IV-I with no date

**Probably only 5 used postal seals believed to be known as such**



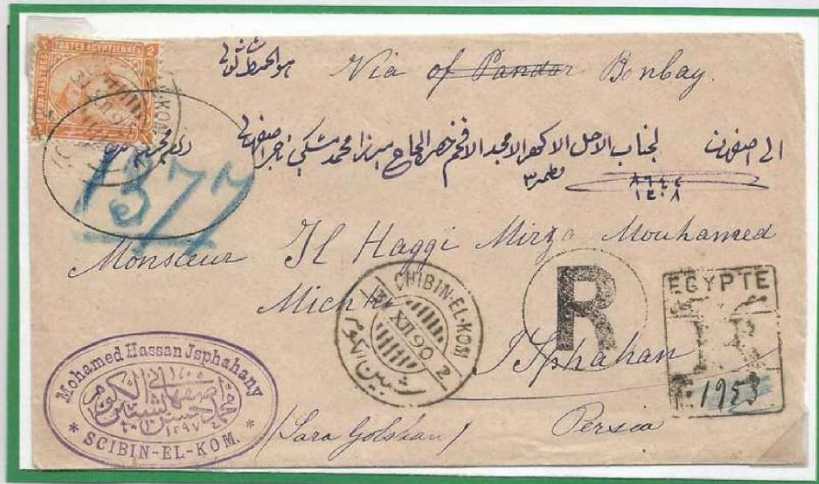
Type IV cancellation used in postage due stamp dated 1889 (Jan 8)

1886 (June 22), Postal card 20 Para as new UPU rate from Shibin El Kom to (Hamburg) Germany, tied by "CHIBIN EL-KOM" c.d.s via "ALEXANDRIE" c.d.s and "HAMBURG" c.d.s arrival (June 29) on left side



### Type V (I, II & III)

This type has 3 designs Type V-I shows 7 barred above and under the date with outer circle diameter 27 mm used between 1889-1904 and Type V-II shows 5 barred above and under the date with outer circle diameter 28 mm used between 1890-1905



1890 (Dec 31), Registered letter from Shibin El Kom to Isphahan Iran, franked with 2 Pi paying the registered first weight, tied by "CHIBIN-EL-KOM" c.d.s has 1891 (Jan 1) "SUEZ" c.d.s on reverse and 1891 (Jan 6) SEA POST OFFICE c.d.s and arrival BOUSHAR 1891 (Jan 18)



1890 (May 11), Local Stationery 5 mills from Shibin El Kom to Cairo, tied by "CHIBIN-EL-KOM" c.d.s Type V-I And "TANTA" c.d.s And "CAIRE" c.d.s arrival on reverse on May 12



1891 (Jul 20), Registered Local Stationery 1 Piaster uprated 5 mills from Shibin El Kom to Cairo, tied by "CHIBIN EL-KOM" c.d.s And "Cairo" c.d.s arrival on on reverse on the next day



1892 (Nov 16), Local Stationery 2 piasters overprinted 5 mills from Shibin El Kom to Alexandria, tied by T.P.O "AMBI-BAHR-CHIBIN" c.d.s and "CHIBIN EL-KOM" c.d.s Type V-1 and T.P.O "CAIRE-ALEXANDRIE" c.d.s on reverse on the same day





Used Postal seal Type V-II dated 1891 (14 May)



Used Salt tax stamp 1 Pound Type V-II dated 1898 (27 Nov)

(MODELE N° 19).

MINISTRY OF FINANCE — نظارة المالية

SALT DEPARTMENT — مصلحة الملح

Date 1897 في ٨ مارس

Agent of ٧٥٥ حضرة وكيل مكتب بوسنة شينين الكرم

Post Office اصرفوا الى محاسبين ايوبي

Pay to ٧٥٥ مبالغ وقدره شينين وعمرشونه ميم

the sum of قية ايم عيت

value of بالخصم على ميزانية مصلحة الملح فصل ٤ بند ٤

Chargeable to salt Budget Chap. Art.

CHIEF OF SECTION, رئيس القسم

CONTROLLER, مراقب

Received the amount above mentioned the 1897

SIGNATURE OF WITNESS IF NECESSARY, امضاء الشهود اذا دعى الحال

SIGNATURE OF RECEIVER, امضاء المرسل اليه

STAMP OF POST OFFICE

1897 (Mar 10) used Salt Department payment form tied by "CHIBIN EL-KOM" c.d.s type V-II

Type V (III) shows 7 barred above and under the date  
with outer circle diameter 32 mm used between 1895-1897



1896 (May 6), Letter sent from Shibin El Kom to Isphahan Iran, franked with 10 Mills covering the first weight stage single letter rate to Persia canceled by " CHIBIN EL-KOM - TANTA " TPO c.d.s transiting Alexandria same day, then from Suez by P&O steamer to Bombai, overland to Isphan via Boushir (June 6)



### Type VI (I & II)

Rural Service type has 2 designs both of them with outer circle diameter 27 mm but type I shows the Arabic word above the English used between 1899-1912 and type II shows the English above the Arabic used between 1915-1916



1899 (Apr 19), Local Stationery 1 mills from Shibin El Kom to Alexandria, tied by "CHIBIN EL-KOM" Rural Service c.d.s And "MISSELHA" Khartus recorded as the earliest date known

### Type VII (I & II)

This type has 2 designs Type VII-I with outer circle diameter 28 mm, used between 1905 to 1913 and Type VII-II The S in SHIBIN instead of C wrote again like type II with outer circle diameter 29 mm, used at the same period



1905 (Nov 8), Local cover mailed from Shibin El Kom to Cairo, franked with 5 Mil tied by "CHIBIN EL-KOM" c.d.s "CAIRO" c.d.s arrival on reverse (Nov 9)



1913 (Nov 7), Registered Stationery 5 mills franked with 15 mil, mailed from Shibin El Kom to Switzerland via Alexandria tied by "SHIBIN EL-KOM "c.d.s, "ALEXANDRIA "c.d.s (Nov 7) and "CHAUX-DE-FONDS "c.d.s on reverse (Nov 13)



1909 (Dec 14), Local cover from Nikla to Shibin El Kom franked with 5 mil, tied by " NIKLA "c.d.s and T.P.O "ALEXANDRIE -CAIRE "c.d.s "ASHMUN "c.d.s , T.P.O "ASHMUN-TANTA "c.d.s (Dec 15) "SHIBIN EL-KOM "c.d.s arrival Type VII -2 on reverse on the next



### Type VIII (I & II)

With outer circle diameter 25 & 28 mm, used between 1913 to 1917 but also recorded with parcels to late date recorded also without numbers, cash and R&P



1918 (22 Jan) 4 5 mil stamps with R&P postmark



1915 (Dec 16), Local cover mailed from Manshat El Charikeen to Cairo, franked with 5 mil tied by "SERVICE RURAL CHIBIN EL-KOM" type VI II c.d.s And Khartouch "MANSHAT EL CHARIKEEN" and "SHIBIN EL-KOM" c.d.s and twice T.P.O "ALEXANDRIE- CAIRO" c.d.s on reverse on the same day

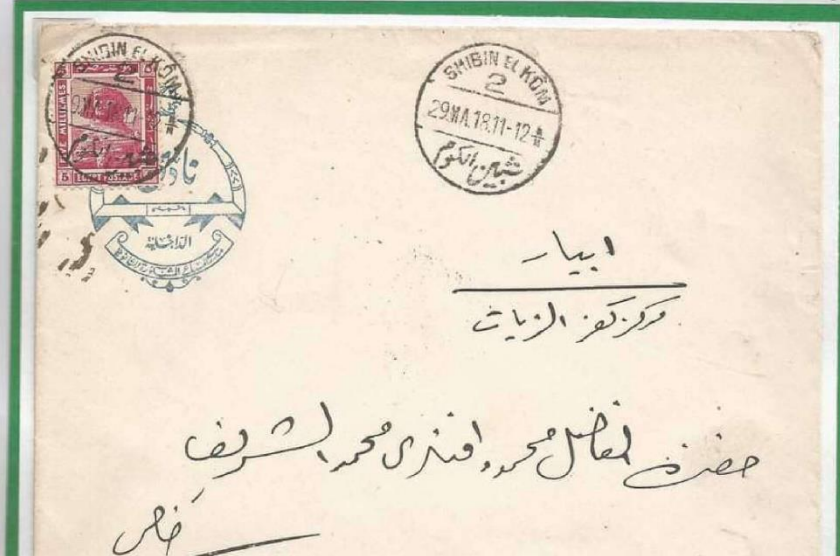
**about 4 months earlier than what has been recorded so far !**

## Type IX

With outer circle diameter 27 mm, recorded with numerical 1 and 2 used between 1916 to 1918

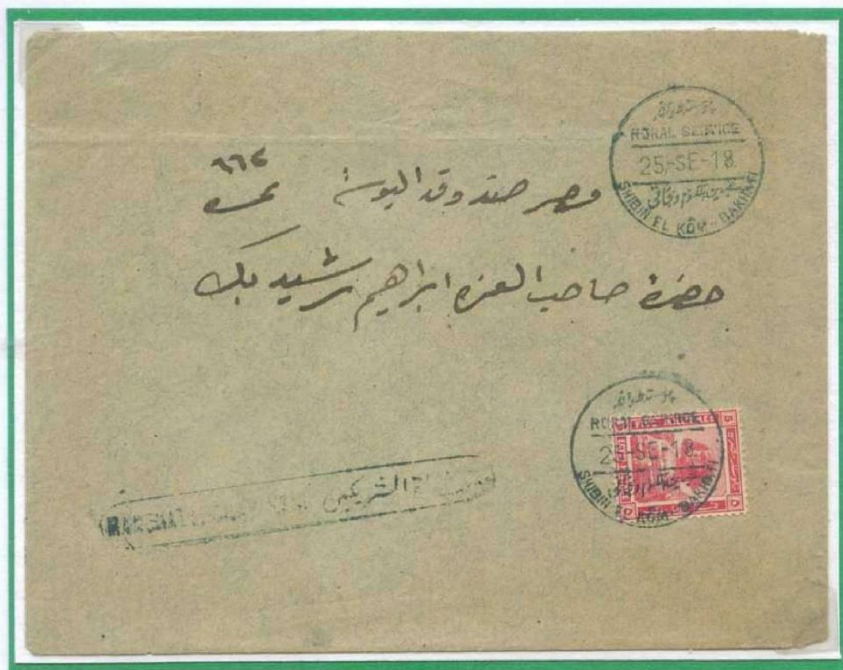


1917 (Jul 3), Local official cover from Bani Suef to Shibin El Kom without value as all official letters at this period, tied by "BANI SUEF" c.d.s and T.P.O "ASSIUT CAIRO" c.d.s and T.P.O "TANTA CAIRO" c.d.s and "SHIBIN EL-KOM" numerical c.d.s at the next day



1918 (Mar 29), Local cover from Shibin El Kom to Ibiar, franked with 5 mil, tied by "SHIBIN EL-KOM" numerical c.d.s and T.P.O "CAIRO-TANTA" c.d.s and "KAFR ELZAYAT" c.d.s and T.P.O "KAFR ELZAYAT-BERMA" c.d.s "IBIAR" c.d.s arrival on reverse on the next day





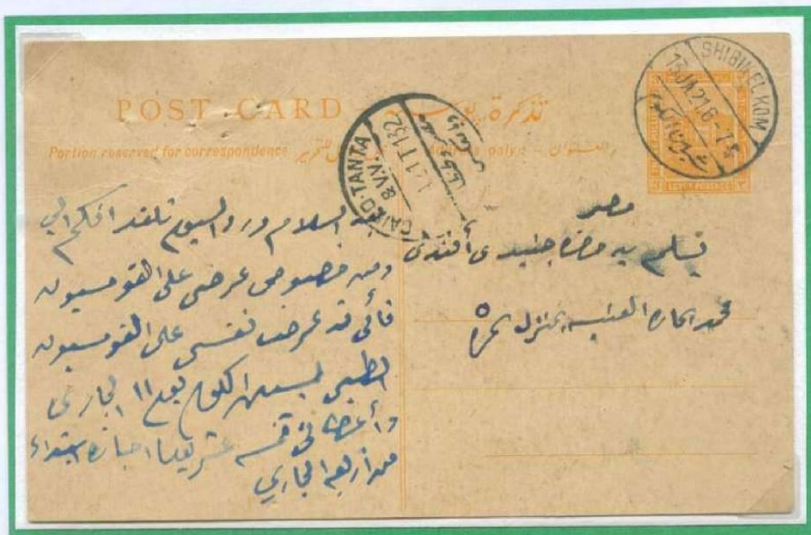
1918 (Sep 25), Local cover from Manshat El Charikeen to Cairo, franked with 5 mil tied by "RURAL SERVICE SHIBIN EL KOM - BAKHATI " c.d.s and Khartoush "MANSHAT EL CHARIKEEN " and "SHIBIN EL-KOM " Numerical 2 c.d.s and T.P.O "ALEXANDRIE- CAIRO " c.d.s" on reverse on the same day



1919 (May 21), Local official cover from Shibin El Kom to Damanhour without value as all official letters at this period , tied by "SHIBIN EL-KOM" c.d.s Type V-II R & P as latest use and "DAMANHOR "c.d.s at the next day

### Type X

With outer circle diameter 26 mm the different about last type in Arabic letter ن



1921 (Jan 13), Local Stationary 3 mil from Shibin El Kom to Cairo,  
tied by "SHIBIN EL KOM " c.d.s and T.P.O "CAIRO-TANTA " c.d.s on the same day



1922 (Apr 10), Local stationary registered letter 10 Mil franked with 5 Mil from Shibin El Kom to Tanta, canceled by " SHIBIN EL KOM " c.d.s and " TANTA " c.d.s arrival on reverse on the same day



### Type XI

shows 11 barred above and under the date with outer circle diameter 28 mm used for Telegraphs

1918  
201

RECEIVED  
From  
At  
By  
To  
At  
By  
Date

REMARKS  
ملاحظات

Office of Origin  
مكتب المنشأ

Date  
التاريخ

Time  
الوقت

EGYPTIAN STATE TELEGRAPHS  
التلغرافات المصرية

عدد سبعمائة وخمسة  
سبعة الممر

طلب دفعه امانا العظيم  
ممنه ن الصلوة سرياً  
عبد الباقى موسى

17-1-188

1918 (Jan 17), local Telegraph tied by "SHEBIN EL-KOM " c.d.s  
unrecorded type discovered by the exhibitor



The members of the Philatelic Society of Egypt, PSE, have for some time noticed that Arabic texts whether on covers, postcards, documents ... etc. are being erroneously translated into English in catalogs, magazines, websites and even private collections, with serious consequences to the interpretation of the item in question.

The PSE has a group of members who are fluent in both Arabic and English languages and are gladly willing to help not only with any translation required, but also with the interpretation of other aspects relating to social, historical and geographical circumstances of the time, such as familial salutations, bureaucratic jargon, handwritten annotations and talismanic markings.

This service is available to anyone, just send to this email a clear scan of the item; front and back of a cover, postcard, content of a letter or document ... etc. and we shall be happy to oblige as soon as possible.

Provisionally, this service is free of charge for single items.

Email : [egyptianphilatelicsociety@gmail.com](mailto:egyptianphilatelicsociety@gmail.com)

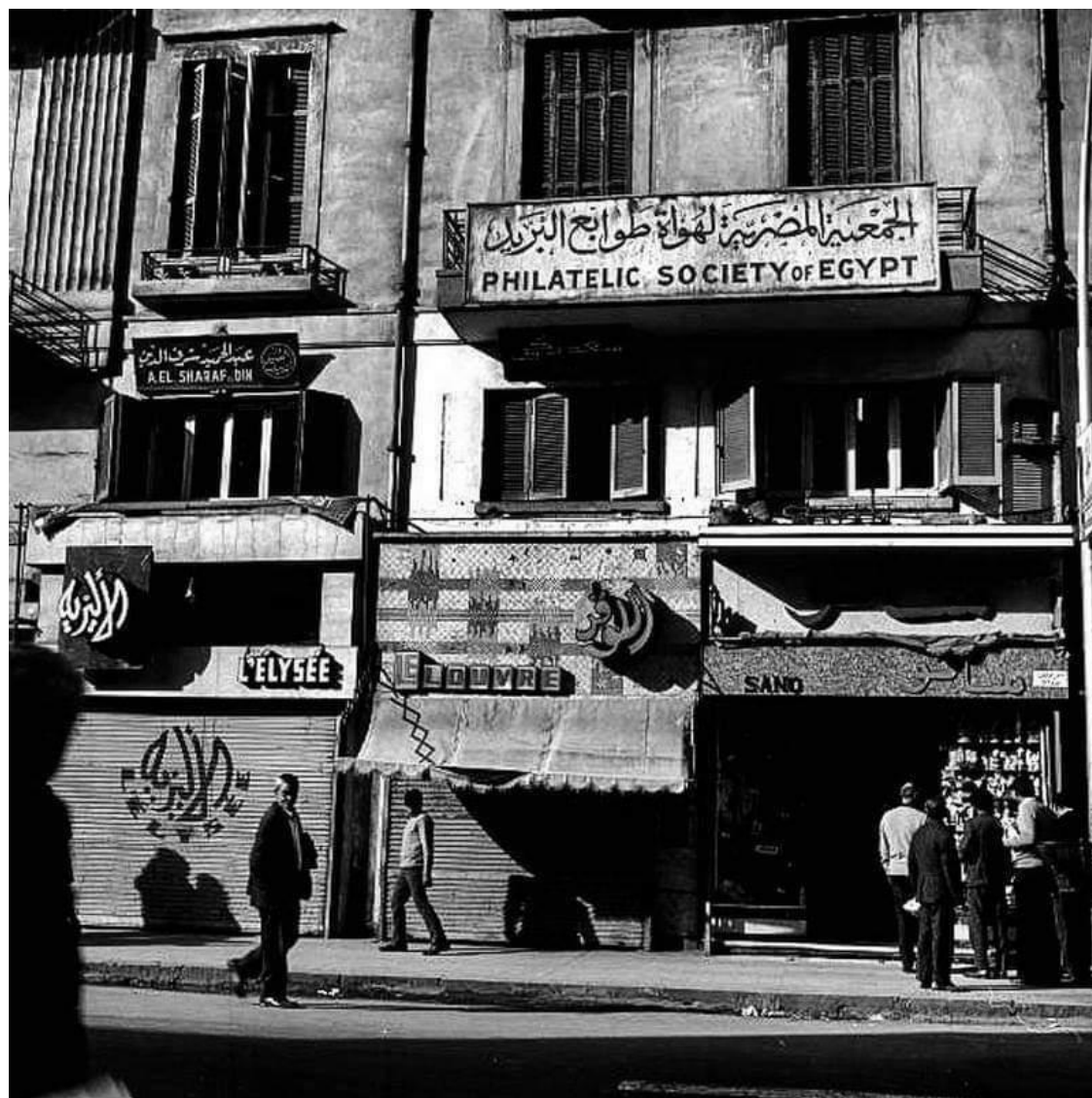
# **The Mohamed Aly Post (MAP)**



## **The True Origin of the Egyptian Vice Royal Post**

**By  
Mahmoud Ramadan**





## PHILATELIC SOCEITY OF EGYPT

16 Abd El-Khalek Sarwat St., Cairo – P.O. Box 142

Email: [egyptianphilatelicsociety@gmail.com](mailto:egyptianphilatelicsociety@gmail.com)